

Analytical Report

Sample ID	2151 - Analysis Service - A0912
Expected	Relugolix
Sample adulterated or impure?	No
Sample Appearance	
Sample type	#N/A -
Date of sample receipt	08-Jan-2025
Date of analysis	13-Jan-2025
Date of Report	14-Jan-2025

Qualitative and Quantitative Results

Substances identified

	Harm Reduction information	Chemical Class	Pubchem ID	Analytical techniques used
Relugolix 94.55%	https://psychonautwiki.org/wiki/Relugolix	Other	10348	FTIR/LCMS/NMR

* uncertainty of measurement +/- 5 %
Unless stated otherwise elsewhere

***The Analysis Report is not a warranty or advertisement for the quality of any supplier or product!
We do not claim nor make any guarantees or recommendations regarding the safety of the analysed samples for human consumption.***

Kykeon Analytics Ltd. assumes no liability for the results or for any damages that may arise from the use of the Analysis Report. The Analysis Report is not to be used for defence purposes in any type of proceeding without the explicit consent of KYKEON, its contents shall not be disclosed to any third party for marketing purposes. The Analysis Report shall not be altered, modified, amended, falsified, forged or changed in any way.



Detailed information regarding our workflow including a full description of the analytical methods applied is freely available under <https://www.kykeonanalytics.com/services/users/>

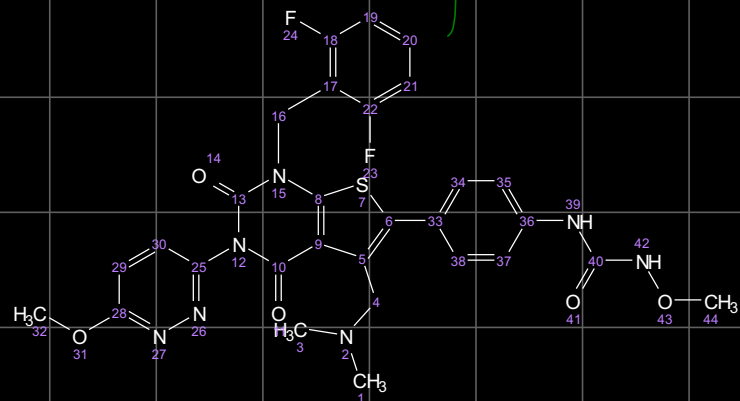
Attachments:



KYKEON
ANALYTICS

Relugolix 94.55%
Int. Std TMB

2025-01-10T19:40:00+0100
NMRReady 100/nanalysis-oc162
DMSO-d6
SF: 102.19
T: 33.3 °C
NS:32
d1: 62.9043
RG: 33.0



10.0 9.5 9.0 8.5 8.0 7.5 7.0 6.5 6.0 5.5 5.0 4.5 4.0 3.5 3.0 2.5 2.0 1.5 1.0

f1 (ppm)

0.94

0.94

4.39

3.00

13.13

3.00

6.08

2.50-DMSO

1100
1000
900
800
700
600
500
400
300
200
100
0
-100

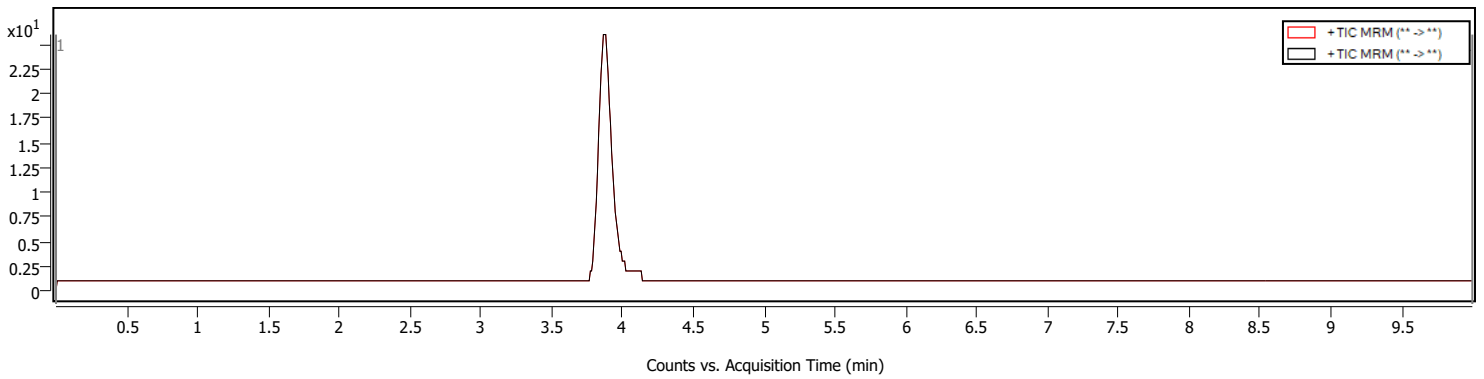
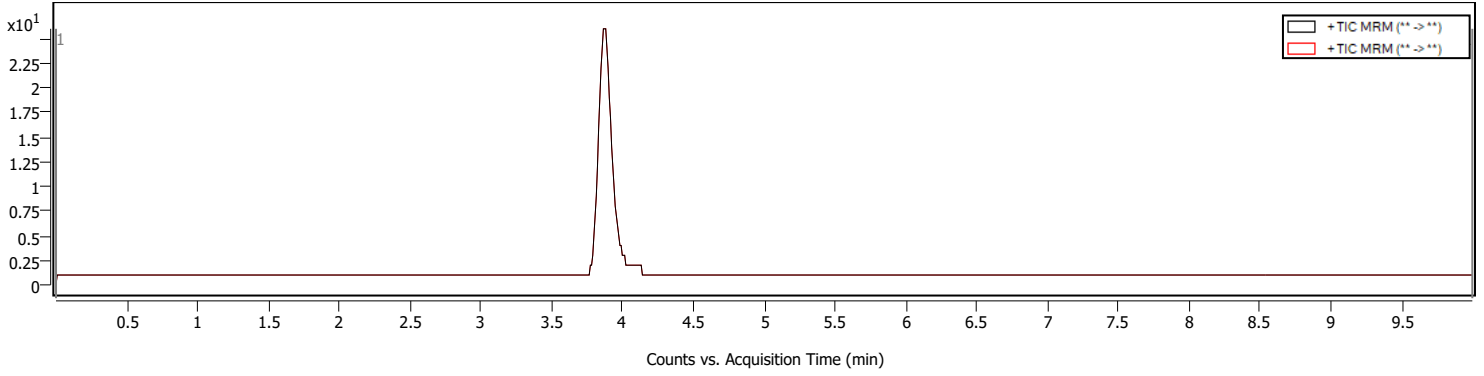
Qualitative Analysis Report



Sample Information

Name	2151_relugolix	Data File Path	D:\Kykeon\Data\2025\01-13\2151_relugolix_MRM.d
Sample ID		Acq. Time (Local)	1/13/2025 3:38:03 PM (UTC+01:00)
Instrument	Instrument 1	Method Path (Acq)	D:\Kykeon\methods\substances\relugolix.m
MS Type	QQQ	Version (Acq SW)	Ultivo LC/TQ C.01.00 (B1677.1 SR1)
Inj. Vol. (ul)	1	IRM Status	
Position	P2-A5	Method Path (DA)	D:\Kykeon\methods\ReportWorkflowMethod-MRM.m
Operator		Result Summary	1 qualified (1 targets)

Sample Chromatograms



Compound Summary

Cpd	Name	Formula	Mass	RT	Area	m/z	Algorithm
1	Relugolix			3.872	168	624.0	MRM

Qualitative Analysis Report

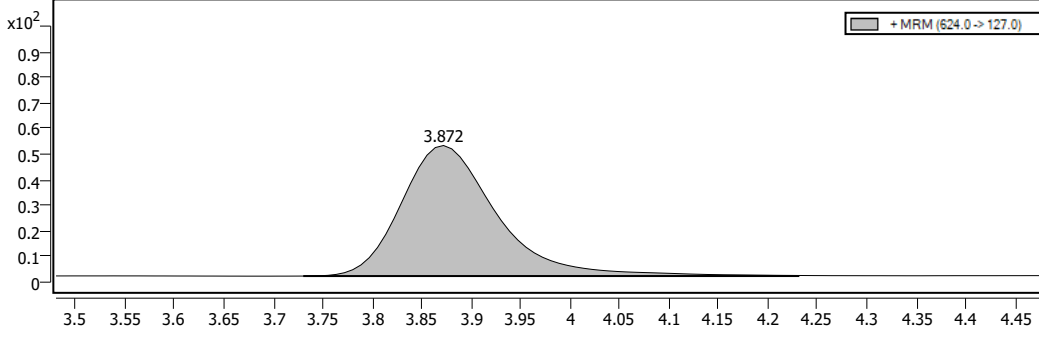


Compound Details

Cpd. 1: Relugolix

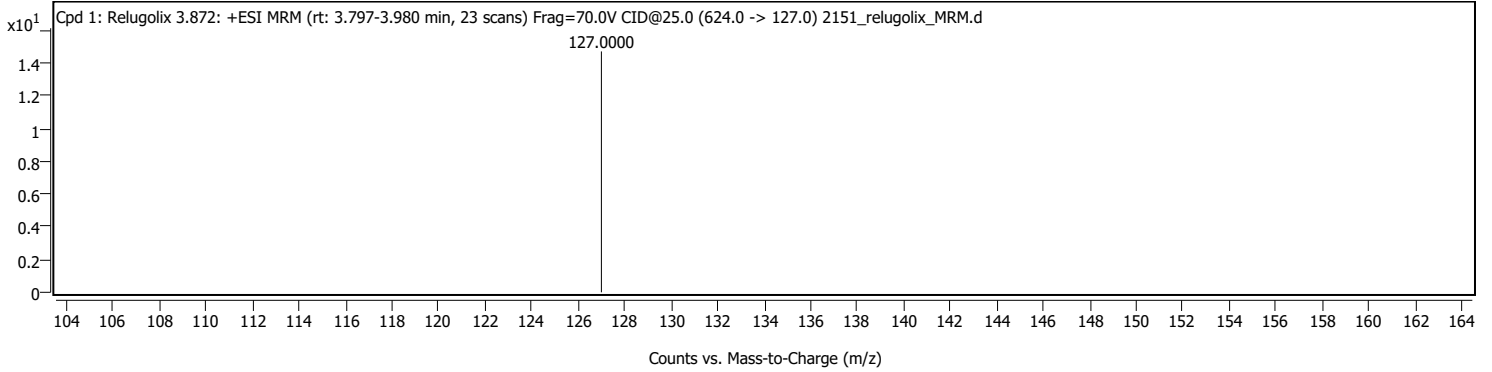
Name	Formula	Mass	RT	Area	m/z	m/z (primary prod.)	CE	FV	Algorithm
Relugolix			3.872	168	624.0	127.0	25.00		MRM

Compound Chromatograms (overlaid)

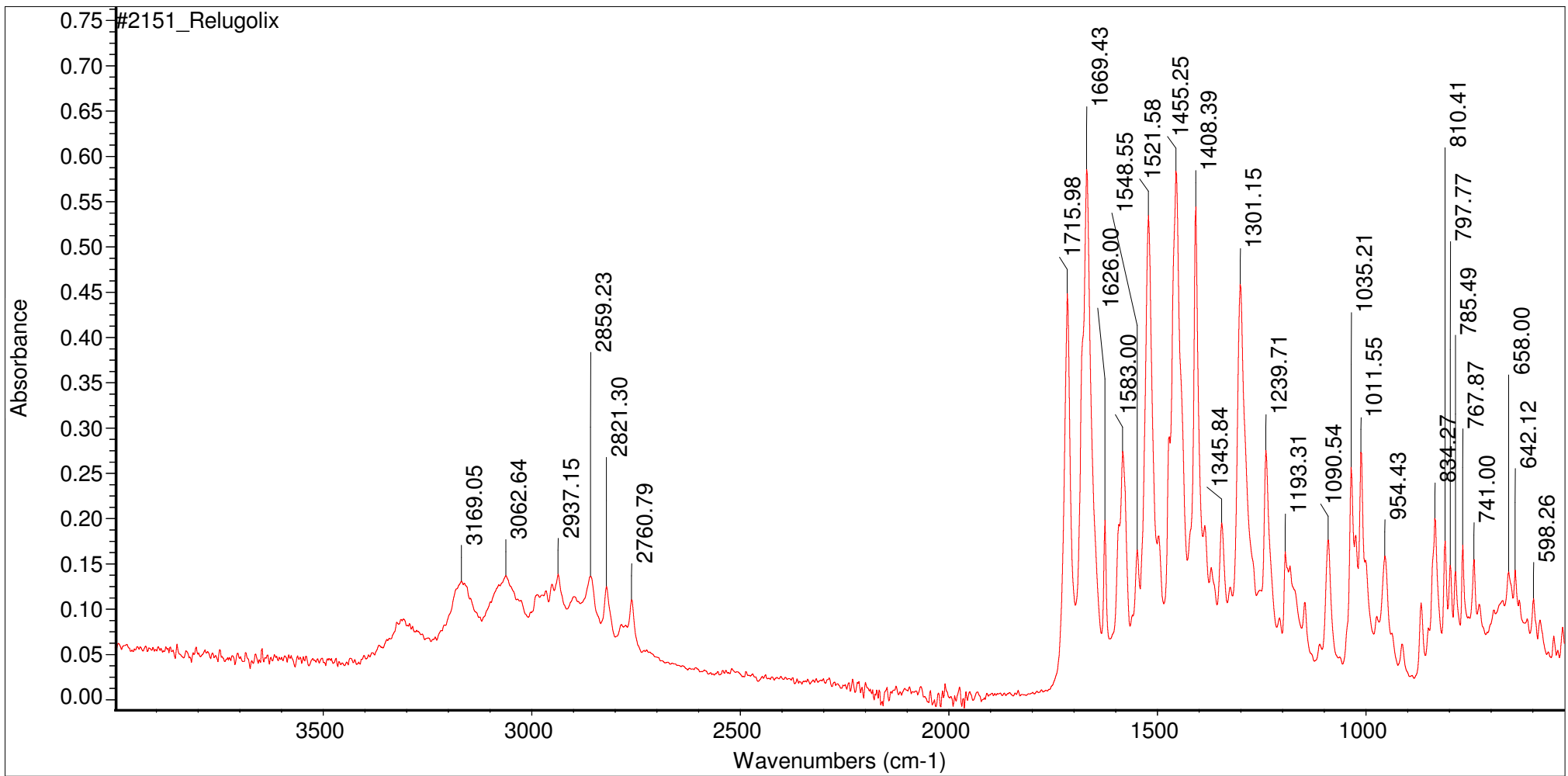


Structure

MS/MS Spectra



MassHunter Qual 10.0
(End of Report)



Wed Jan 08 13:06:22 2025 (GMT+01:00)

FIND PEAKS:

Spectrum: #2151_Relugolix
 Region: 3999.81 524.57
 Absolute threshold: 0.109
 Sensitivity: 50
 Peak list:

Position:	Intensity:
598.26	0.112
642.12	0.143
658.00	0.141
741.00	0.157
767.87	0.173
785.49	0.143
797.77	0.150

Position:	810.41	Intensity:	0.176
Position:	834.27	Intensity:	0.203
Position:	954.43	Intensity:	0.159
Position:	1011.55	Intensity:	0.279
Position:	1035.21	Intensity:	0.259
Position:	1090.54	Intensity:	0.178
Position:	1193.31	Intensity:	0.166
Position:	1239.71	Intensity:	0.277
Position:	1301.15	Intensity:	0.461
Position:	1345.84	Intensity:	0.196
Position:	1408.39	Intensity:	0.549
Position:	1455.25	Intensity:	0.588
Position:	1521.58	Intensity:	0.536
Position:	1548.55	Intensity:	0.167
Position:	1583.00	Intensity:	0.275
Position:	1626.00	Intensity:	0.199
Position:	1669.43	Intensity:	0.590
Position:	1715.98	Intensity:	0.452
Position:	2760.79	Intensity:	0.111
Position:	2821.30	Intensity:	0.125
Position:	2859.23	Intensity:	0.136
Position:	2937.15	Intensity:	0.139
Position:	3062.64	Intensity:	0.137
Position:	3169.05	Intensity:	0.131